

5 Thurlwood Croft, Westhoughton, Bolton, Lancashire, BL5 3RF



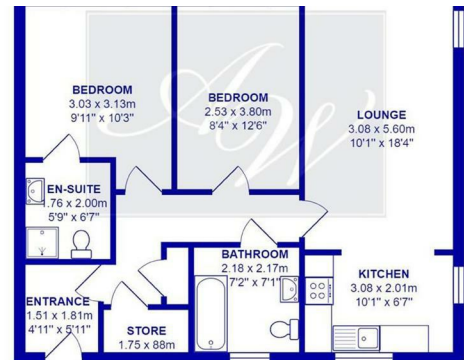
£650 Per Calendar Month

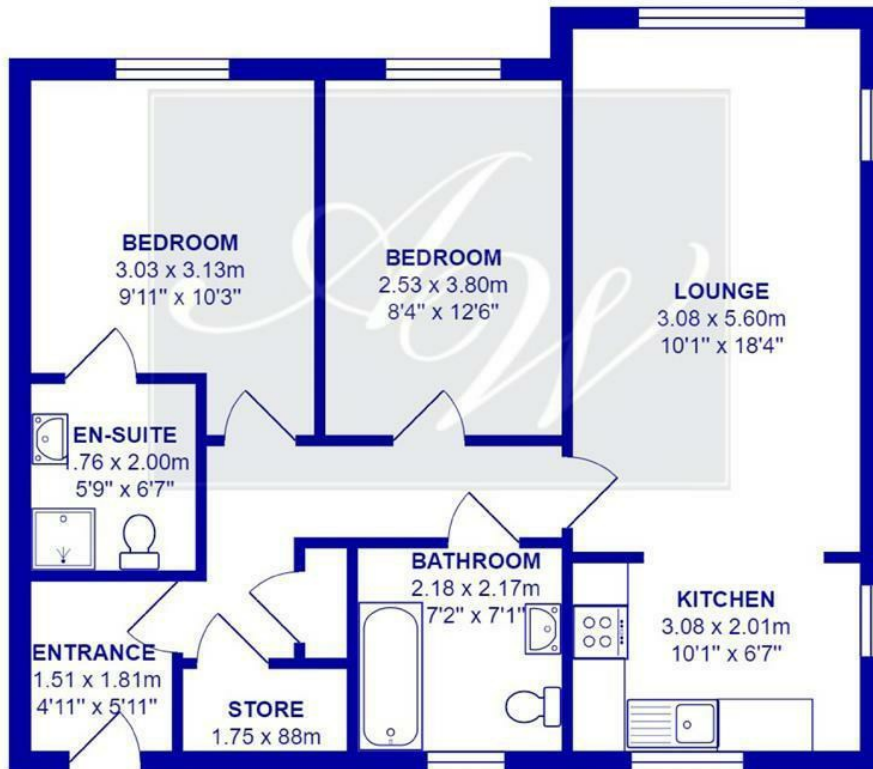




69 Winter Hey Lane Horwich Bolton Greater Manchester BL6 7NT
Tel: 01204 329990 | Fax: | Email: sales@redmancasey.co.uk
www.redmancasey.co.uk







Total Area: 65.4 m² ... 704 ft²

Energy Efficiency Rating		
	Current	Potential
Very energy efficient - lower running costs		
(92 plus) A		
(81-91) B		
(69-80) C		
(55-68) D		
(39-54) E		
(21-38) F		
(1-20) G		
Not energy efficient - higher running costs		
	72	80
England & Wales	EU Directive 2002/91/EC	

Environmental Impact (CO ₂) Rating		
	Current	Potential
Very environmentally friendly - lower CO ₂ emissions		
(92 plus) A		
(81-91) B		
(69-80) C		
(55-68) D		
(39-54) E		
(21-38) F		
(1-20) G		
Not environmentally friendly - higher CO ₂ emissions		
	68	67
England & Wales	EU Directive 2002/91/EC	

